

JUST LISTED

80 Great Lawn

WOODBURY VILLAGE · IRVINE, CALIFORNIA 92620

\$1.388.888

**3
BED**

**2.5
BATH**

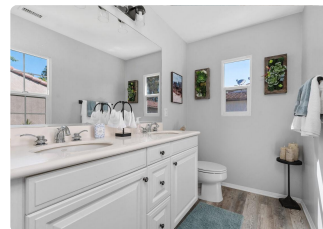
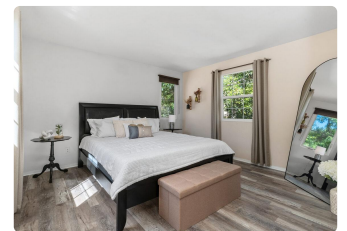
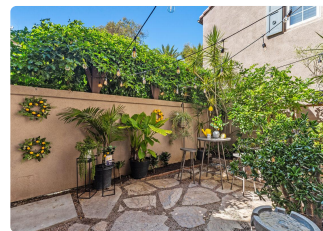
**1,223
SQFT**

**2-CAR
GAR**

Turnkey in the Heart of Woodbury

A beautifully refreshed, detached home where brand-new wood-tone flooring and crisp white walls meet a bright, open-concept layout. Glass doors lead to a private flagstone courtyard wrapped in lush greenery — a rare, low-maintenance retreat made for morning coffee and evenings under the stars.

- Bright white kitchen · gas range · breakfast nook
- Brand-new flooring & fresh paint throughout
- Private flagstone courtyard with lush gardens
- Primary suite · dual-vanity bath · walk-in glass shower
- Three full bedrooms
- Attached 2-car garage · direct access
- Walk to Woodbury Elementary + resort-style pools & parks
- Award-winning Irvine Unified schools



zRE Group

Carly Zamani

949-232-8211 · zregroup.org

DRE #02030224